

CHARMILL

RESIDENTIAL

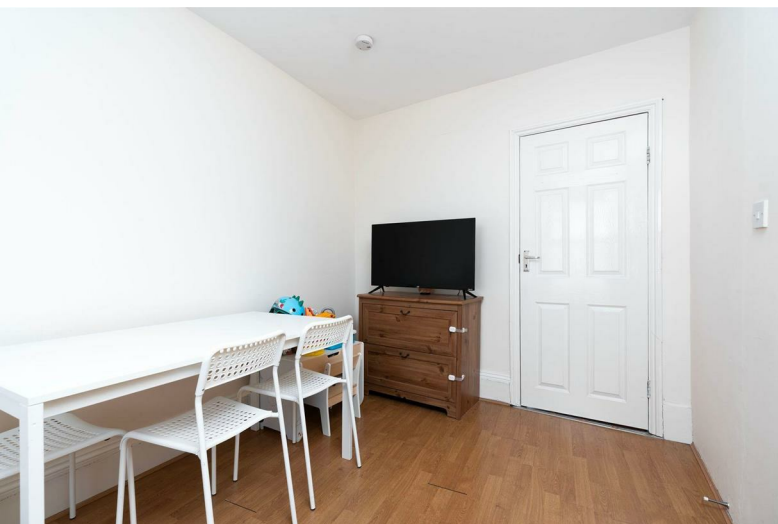


Fulham Palace Road, London

£495



Fulham Palace Road



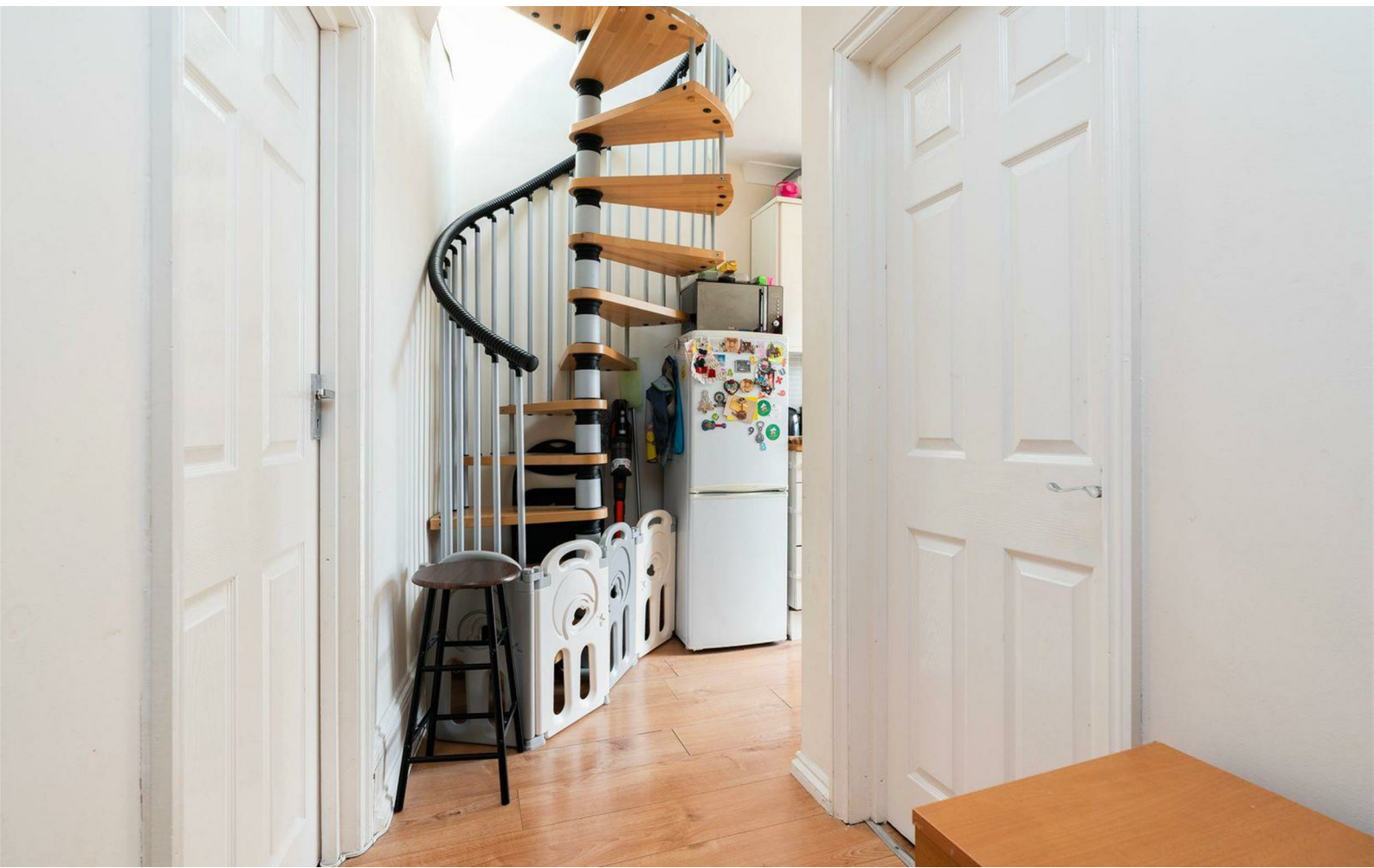
Description

Bills includedA well-presented two-bedroom split-level apartment arranged over the third and fourth floors above commercial premises on Fulham Palace Road. The lower level comprises a bright reception room with wooden flooring, a separate fitted kitchen, a double bedroom with ample built-in storage, and a fully tiled bathroom. A further spacious double bedroom is situated on the upper floor.

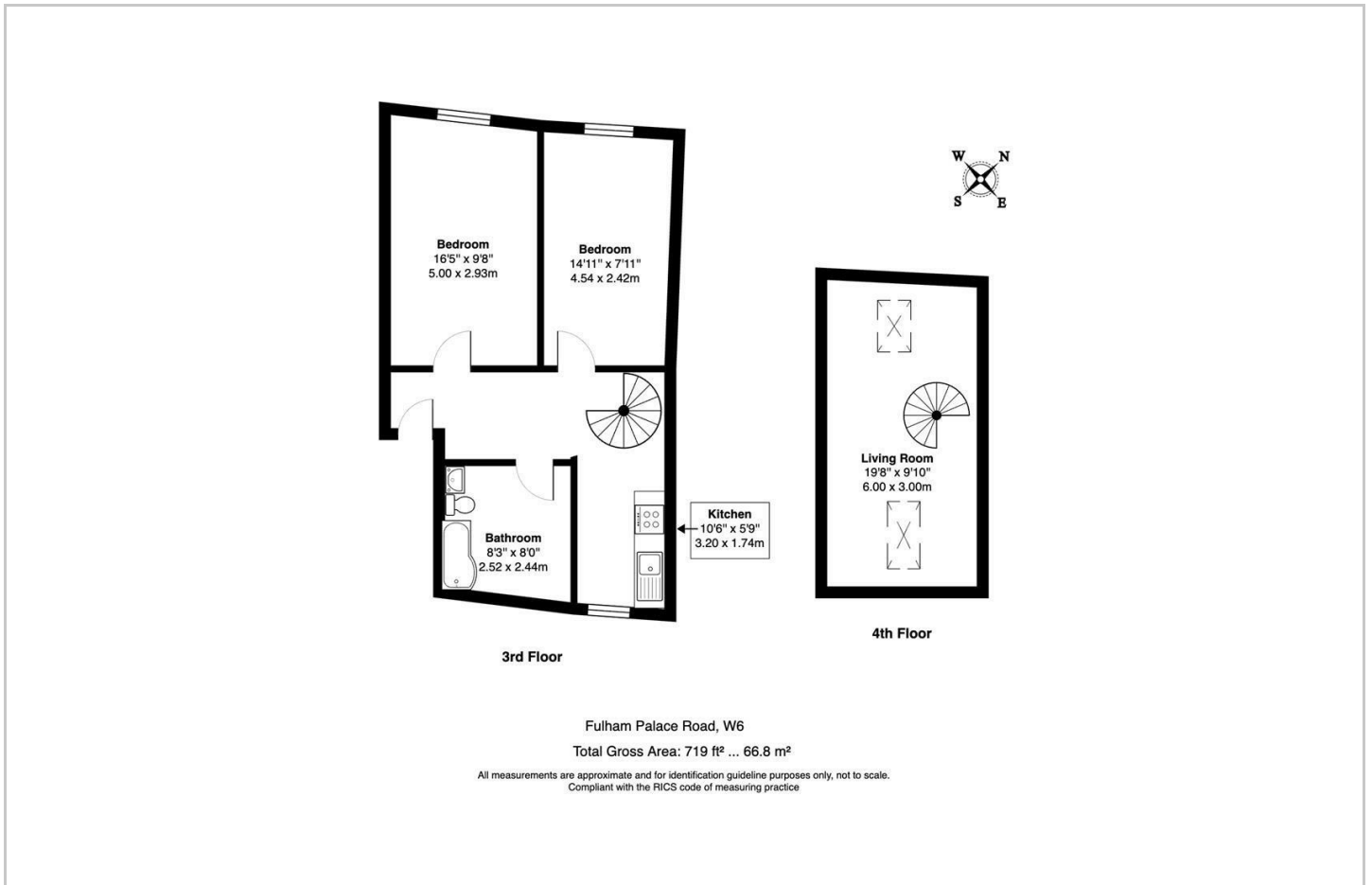
The property is ideally positioned close to the wide range of shops, cafés and restaurants along Fulham Palace Road. Excellent transport links are available, with Hammersmith Station approximately 0.4 miles away, providing access to the District, Piccadilly, Circle and Hammersmith & City lines, while Barons Court Station is approximately 0.7 miles away, offering District and Piccadilly line services.

- 2 bedroom apartment
- Ample storage
- Fully-fitted kitchen
- Ideal location
- Wooden flooring

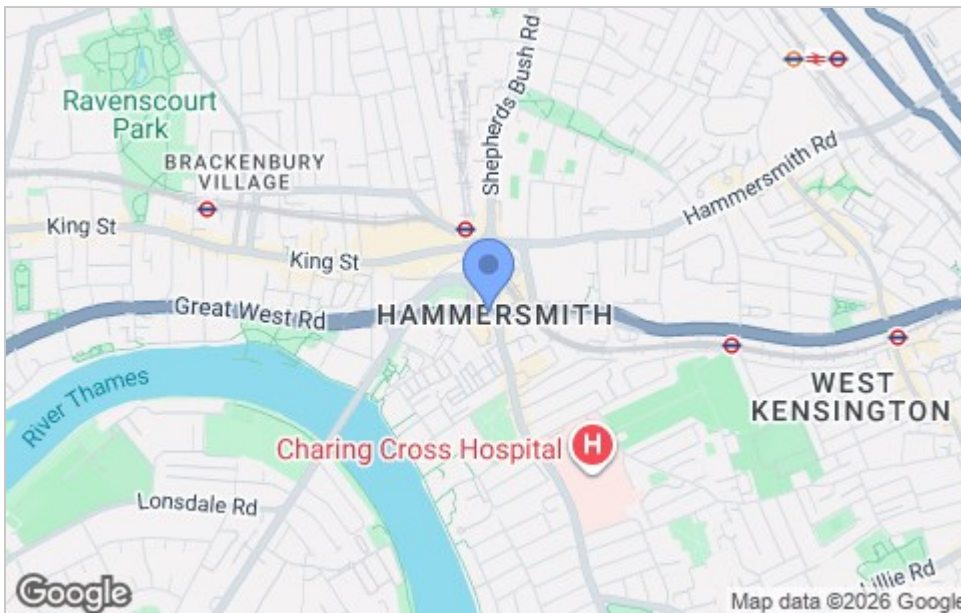




Floor Plan



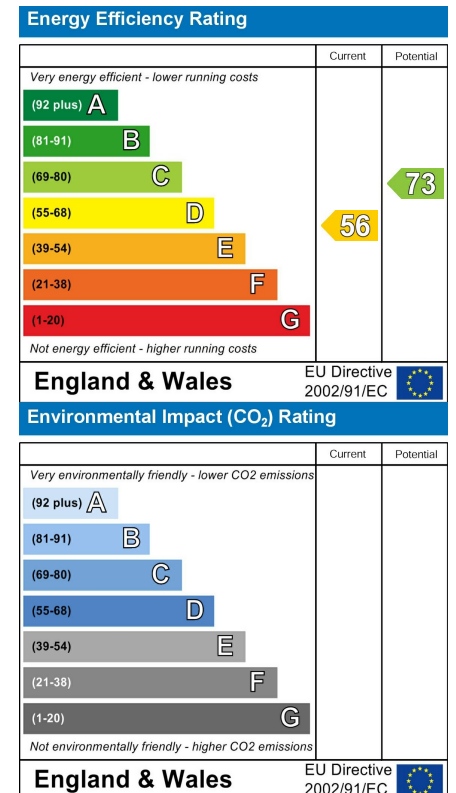
Area Map



Viewing

Please contact us on 020 7046 6275 if you wish to arrange a viewing appointment for this property or require further information.

Energy Efficiency Graph



These particulars, whilst believed to be accurate are set out as a general outline only for guidance and do not constitute any part of an offer or contract. Intending purchasers should not rely on them as statements of representation of fact, but must satisfy themselves by inspection or otherwise as to their accuracy. No person in this firm's employment has the authority to make or give any representation or warranty in respect of the property.

020 7046 6275 • sales@chamillresidential.co.uk • 51 Maida Vale, Little Venice, London W9 1SD
chamillresidential.co.uk